

Flat Suction Cups(Round)

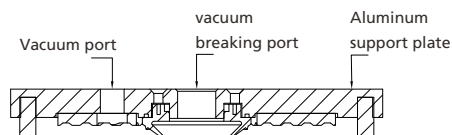
Vacuum Suction Cup MRP-B

Suction area (ϕ) 160mm to 250 mm

Vacuum Suction Cup MRP-B



System design vacuum Suction Cup MRP-B



Introduction and application

- ◆ For handling furniture parts, wood floors and various large and flat air-permeable workpieces. Carry wood products with rough surface.

Design

- ◆ It consists of sponge rubber pad, aluminum support plate and air blowing valve core.
- ◆ The sponge is securely embedded in the support plate, Worn sponge can be replaced separately
- ◆ Rubber pad on the bottom of the support plate to protect the workpiece from damage

Ordering Guide vacuum Suction Cup MRP-B

| Item no. | Suction area [mm] | Material and Shore Hardness | Connection thread |
|----------|-------------------|-----------------------------|--------------------|
| MRP-B | 160 to 250 | EPDM-30 | G1/4-IG G1/2-IG |

Note :MRP IG=Internal thread (F)

Ordering Data vacuum Suction Cup MRP-B

| Type | Ordering Data |
|-------------------|----------------|
| MRP-B 160 G1/2-IG | 90.02.01.00636 |
| MRP-B 200 G1/2-IG | 90.02.01.00637 |
| MRP-B 250 G1/2-IG | 90.02.01.00638 |

Flat Suction Cups(Round)

Vacuum Suction Cup MRP-B

Suction area (ϕ) 160mm to 250 mm



Order data for spare parts and accessories

| Type | Sealing ring DR-MRP |
|-----------------|---------------------|
| MRP 160 G1/2-IG | 90.02.03.00489 |
| MRP 200 G1/2-IG | 90.02.03.00490 |
| MRP 250 G1/2-IG | 90.02.03.00491 |

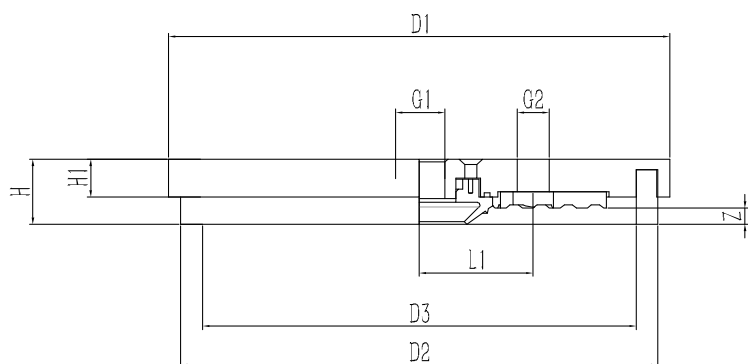


Technical Data Vacuum Suction Cup MRP-B

| Type | suction force Ds[N] | Volume [cm ³] | Recom.internal hose diameter d[mm] |
|-------------------|------------------------|------------------------------|--|
| MRP-B 160 G1/2-IG | 1060 | 128 | 12 |
| MRP-B 200 G1/2-IG | 1700 | 198 | 12 |
| MRP-B 250 G1/2-IG | 2714 | 305 | 12 |



Design Data Vacuum Suction Cup MRP-B



| Type | Dimensions [mm] | | | | | | | | |
|-----------|-----------------|-----|-----|----|----|----|------|------|-----------|
| | D1 | D2 | D3 | H | H1 | L1 | G1 | G2 | Z(Stroke) |
| MRP-B 160 | 185 | 175 | 160 | 24 | 14 | 42 | G1/2 | G1/4 | 6 |
| MRP-B 200 | 225 | 215 | 200 | 24 | 14 | 52 | G1/2 | G1/4 | 6 |
| MRP-B 250 | 275 | 265 | 250 | 24 | 14 | 77 | G1/2 | G1/4 | 6 |